

Bluetooth Dash App Interface Module

Part Number: 230-VM-DASHAPP

Module Configuration Setup:

Module Type: BLE_DASH_APP

Serial Number:

Channel Name: Dash App

Default Passcode: 123456

Description:

This interface module is used to transmit VNET data from your Racepak data system to a mobile device running the Racepak Virtual Dash App. This module allows you to select which channels you wish to make visible to the Virtual Dash App. On power up, the blue LED located at the base of the module will flash several times and then go out. This LED will turn on solid when the Virtual Dash App is connected to the module. Please consult the 'Help' section of the Virtual Dash App on your mobile device for instructions on setting up the displays in the Virtual Dash App.

Module Installation:

The V-Net connector module can be inserted at any location in the V-Net data bus in your vehicle. Select locations where the connector module can be mounted safely. Avoid mounting near heat sources and high voltage ignition wires. The connector module must be mounted in a location that does not exceed 185°F or the module will be damaged.



V-Net Connection and Setup:

This module has been designed to interface directly to the Racepak V-Net CAN bus.

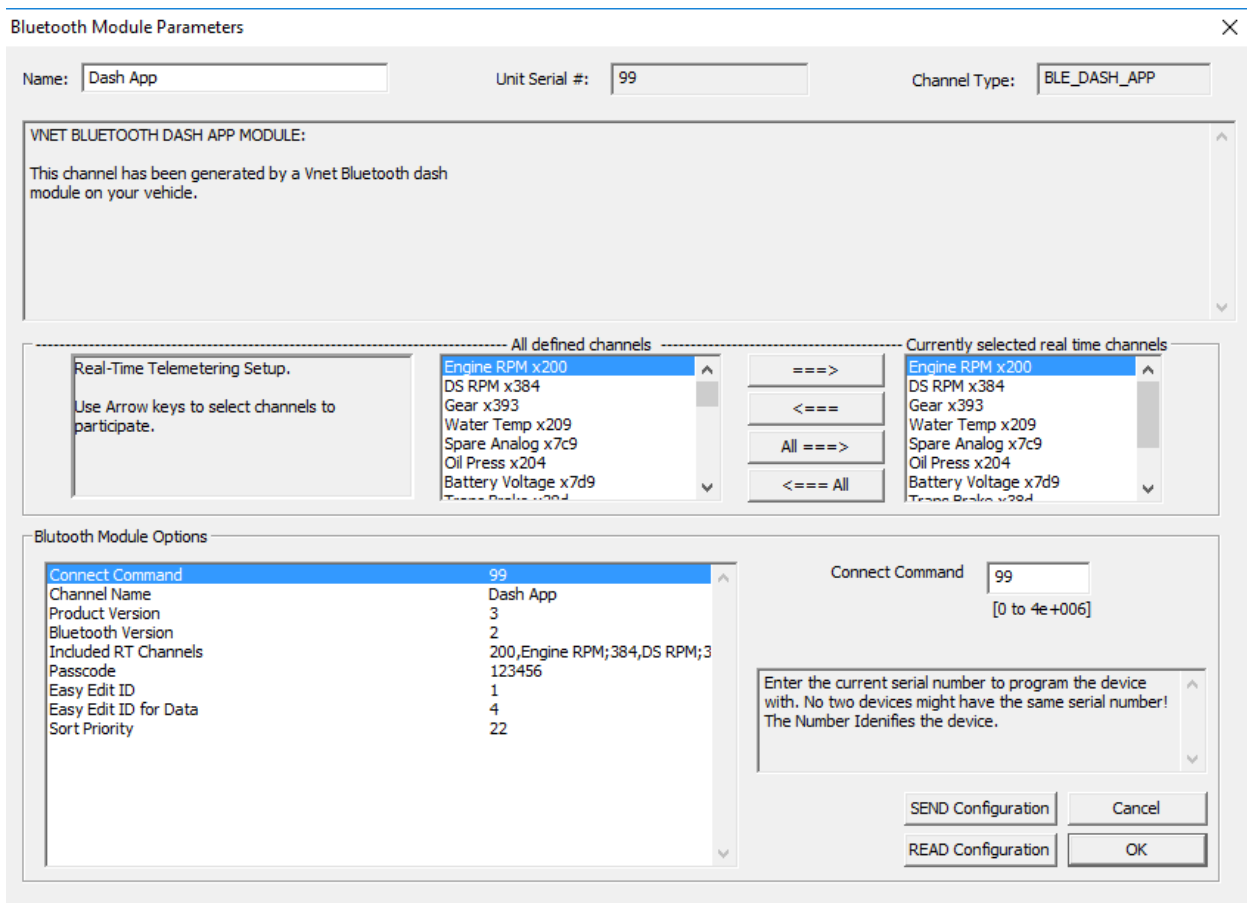
You will also need to turn on the Racepak Virtual Dash App on your wireless device in order to load the channels that will be displayed on the dash.

Configuration File Update:

Before you can use this module with your data logger you will need to update your Car Configuration File in your PC. To perform this step you will need to connect the data logger to your PC using the unit's serial interface cable (See your unit's instruction manual for details). Next start the RacePak DataLink program. If you selected your car configuration file as the default configuration file, the file will be opened and the file tab for the car configuration file will be selected. If it is not, open your car configuration file by selecting the **Open Car Configuration** menu item located in the **Files** main menu selection.

Next apply power to your on board system, wait 10 seconds and select the **Read VNET Config** menu item located in the **Edit** main menu selection. The DataLink program will read in the configuration of your system. If everything works properly, a new channel button named 'Dash App' will be added to the configuration file.

Right-clicking on the Dash App channel will open the dialog box shown on the next page, where you can select the available channels you wish to stream to your wireless device via the Racepak Bluetooth connection. We recommend selecting no more than 32 channels for real-time streaming to allow the system to work with optimum efficiency. **It is also highly recommended that you change the passcode to something other than the factory default of 123456.** This will prevent other people from intentionally or unintentionally connecting to your Dash App module. The Dash App module allows for only one connection at any given time.



Once you have changed the passcode and selected the desired channels, click 'SEND Configuration'. The program should say 'Device programmed successfully'. Click 'OK' to clear this message, and then click 'OK' to close the Bluetooth dialog box. You may now open the Racepak Virtual Dash App, connect to the module and program the display pages as you desire. Please consult the 'Help' section of the App on your mobile device for programming instructions.

IMPORTANT INFORMATION FOR V300 AND V500 DATA LOGGERS:

V300 Data Loggers Require Firmware Version 36 or Higher.

V500 Data Loggers Require Firmware Version 53 or Higher.

If you do not know how to check the firmware version currently installed in your V300 or V500 data logger, please call us 949-709-5555 for assistance.

If you have a V300 or V500 data logger and do not meet the minimum firmware version requirement, you will need to send your data logger to Racepak to have the firmware upgraded.

All other Racepak data loggers, including V300SD, will work with all firmware versions and do not require any firmware updates to work properly with this module.