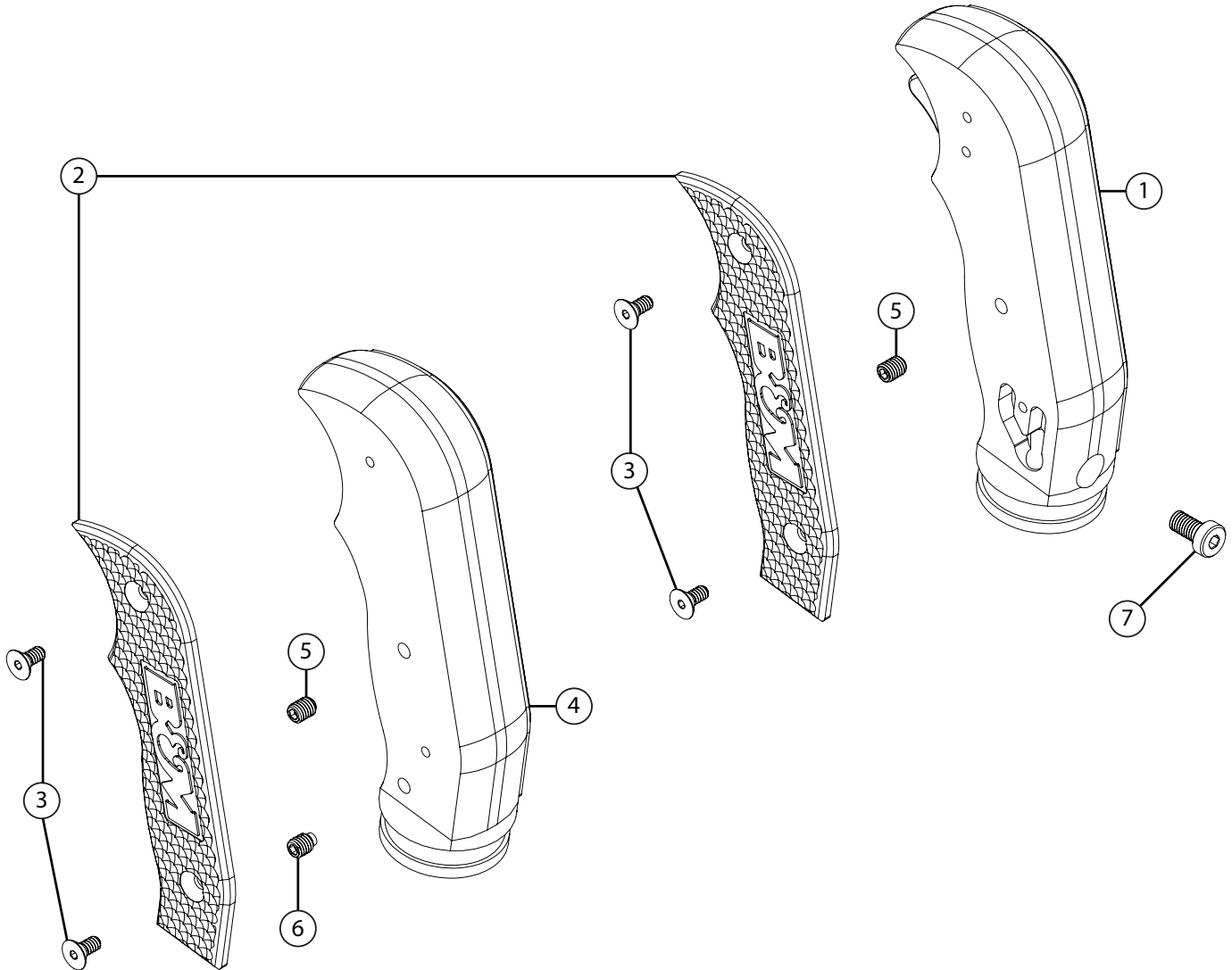




Installation Instructions
81103
 2018-20 JEEP WRANGLER
 2020 JEEP GLADIATOR
 2.0L, 3.6L ENGINE
 Automatic Transmission



ITEM	PART NO.	DESCRIPTION	QTY.
1	4001758	Shift Handle Body, assembly includes:	1
5	3401547	10-32 x ¼" Set Screw	1
N/A	4001759	Magnum Grip Trigger	1
	4001792	Trigger Cover	1
	4001793	Trigger Spacer	1
2	4001492	Left Shifter Plate	2
N/A	4001495	Right Shifter Plate	2
3	3401537	6-32 x ¾" FH SHS Screw	8
	3401536	6-32 X ½" Flat Head Hex	1

ITEM	PART NO.	DESCRIPTION	QTY.
4	4001810	Transfer Case Handle	1
N/A	81103BA	Hardware Pack Includes:	1
5	3401547	10-32 x ¼" Set Screw	1
6	3401629	10-32 x ¼" L, Extended Tip Set Screw	1
7	3401605	M5-0.8 x 10MM SHCS Screw	1
N/A	3401604	6" Cable Tie	2

OVERVIEW:



1. Take a moment to read and understand these instructions before installing your Flowmaster performance system.

NOTE: Please inventory all parts now before continuing and if necessary, report any missing items to our tech line. This will avoid potentially stranding your vehicle until any missing replacement parts arrive.

REMOVE FACTORY COMPONENTS:



2. Turn off vehicle, set parking brake, then carefully separate cover from console.



3. On underside of console cover, release tabs at rear and front of leather boot to separate boot from cover.



4. Lift boot cover up fully to expose and remove set screw.



NOTE: Index orientation of boot cover as you remove it for later re-installation.

5. Lift factory shift handle and boot cover off of shifter stem.



6. Press retaining tabs on shifter collar, then pull boot cover off of shifter handle.



- The leather boot is glued to the plastic collar. Detach boot from collar, working carefully to avoid tearing boot.

Install your Magnum Grip Shifter Handle:



- Insert **shift handle body (1)** fully into boot cover as shown.

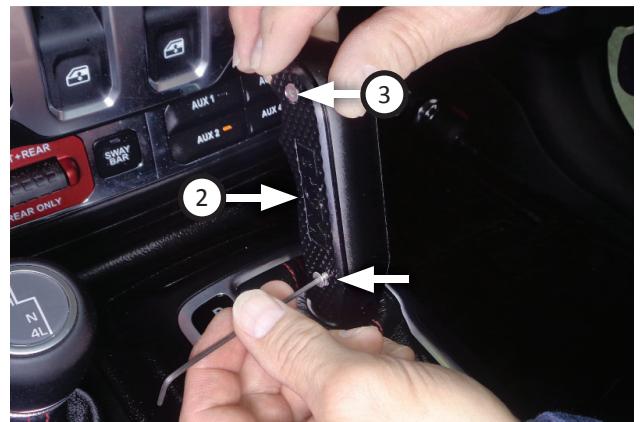


- Place **6" cable tie** around boot cover and shift handle body. Straighten boot cover around shift handle body then tighten cable tie with its buckle situated in front indent. Then trim tail of cable tie.



NOTE: Do not press shifter assembly fully onto shifter stem.

- Place shift handle body and boot onto shifter stem.



- Remove **SHS screws (x2) (3)** and **left shifter plate (2)** from shift handle body.



- Remove **set screw (5)** from shift handle then press handle fully onto stem. Apply loktite to set screw then re-install it.

NOTE: When shifter is pressed fully down, the trigger mechanism should spring out, ready to engage.



13. Apply loktite to **SHCS screw (7)** then install it into shift handle body as shown.



Install your Magnum Grip Transfer Case Shifter Handle:



14. Reinstall screws and left shifter plate (removed step 11) onto shift handle body.



16. Unclip transfer case shifter boot from frame then pull it up to expose screw in its side.



15. Clip boot cover into console cover and fit console cover back into place onto console.



17. Remove screw from transfer case shifter knob as shown.

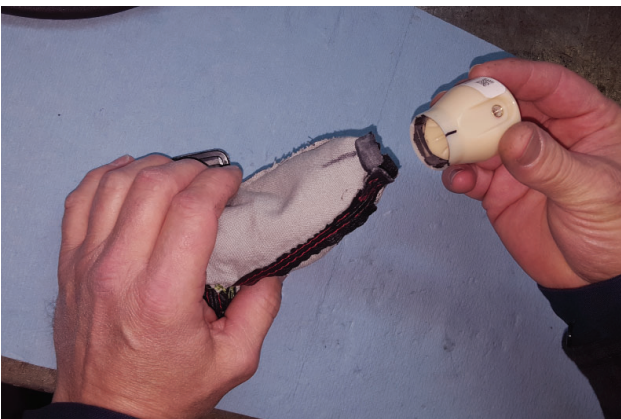


NOTE: Index orientation of boot cover as you remove it for later re-installation.

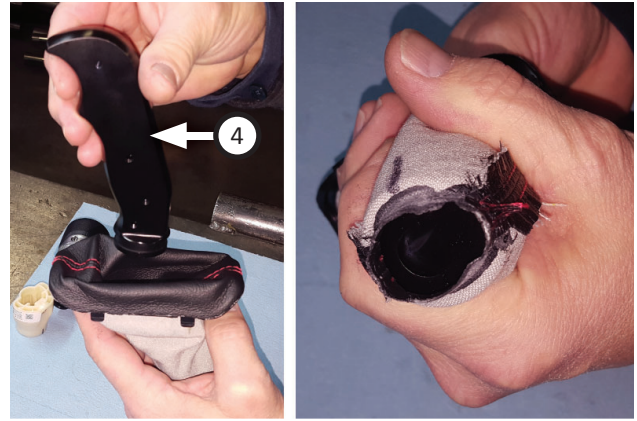
18. Lift factory shift handle and boot cover off of transfer case shifter stem.



19. Pull collar and boot cover off of shifter handle.



20. The leather boot is glued to the plastic collar. Detach boot from collar, working carefully to avoid tearing boot.



21. Insert transfer case handle (4) fully into boot cover as shown.



22. Place 6" cable tie around boot cover and transfer case handle. Straighten boot cover around handle then tighten cable tie with its buckle situated in indent. Trim tail of cable tie.



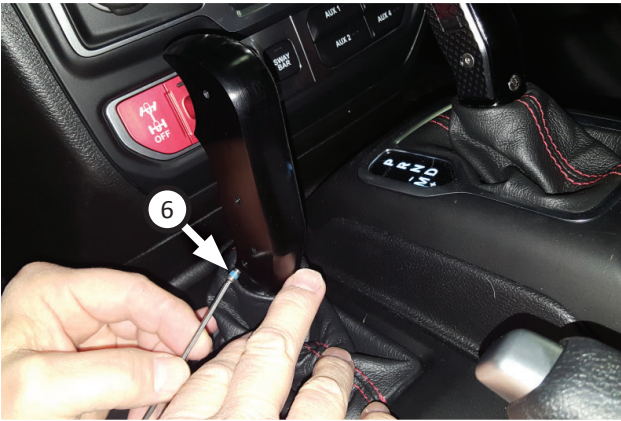
23. Install transfer case handle and boot over shifter stem.



24. Clip boot cover into console cover as shown.



27. Reinstall screws and left shifter plate (removed step 25) onto shift handle body.



25. Remove **SHS screws (x2) (3)** and **left shifter plate (2)** from transfer case handle. Apply loktite to **extended tip screw (6)** then install into transfer case handle as shown.



26. Apply loktite to **set screw (5)** then install into transfer case handle as shown.



Congratulations, the installation of your B&M Magnum Grip AT Handle Set is now complete!

