



Installation Instructions
817895
2019-20 GM SILVERADO/SIERRA 1500
5.3L ENGINE
2/4 WD with Dual Exhaust
 Crew Cab 4WD & Double Cab

OVERVIEW:

1. Take a moment to read and understand these instructions before installing your Flowmaster performance system.

NOTE: Please inventory all parts now before continuing and if necessary, report any missing items to our tech line. This will avoid potentially stranding your vehicle until any missing replacement parts arrive.

| ITM # | PART # | DESCRIPTION | QTY. |
|-------|-----------|-------------------------|------|
| 1 | 26742S | Inlet Pipe | 1 |
| 2 | TB700S | Extension Pipe | 1 |
| 3 | 8530452-Z | Muffler | 1 |
| 4 | 86559S | Right Front Tailpipe | 1 |
| 5 | 86560S | Left Front Tailpipe | 1 |
| 6 | 86561S | Right Rear Tailpipe | 1 |
| 7 | 86562S | Left Rear Tailpipe | 1 |
| N/A | PK981 | Hardware Pack includes: | 1 |
| 8 | MC300BS | 3" Band Clamp | 2 |
| 9 | MC250BS | 2½" Band Clamp | 4 |
| 10 | HW503 | ½" Hanger Keeper | 5 |

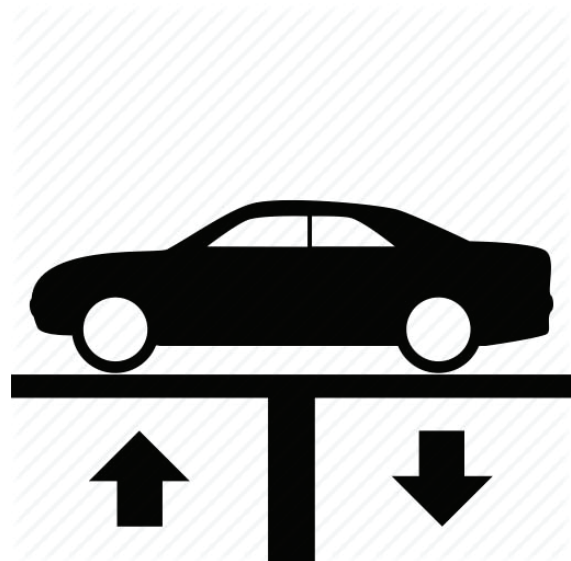
REMOVE STOCK EXHAUST SYSTEM:

2. Raise vehicle up on a hoist or rack to working height. If you don't have access to a hoist or rack, support vehicle with jack stands.

WARNING:
 Avoid serious burns! Allow your vehicle time to cool completely before touching any factory engine components.

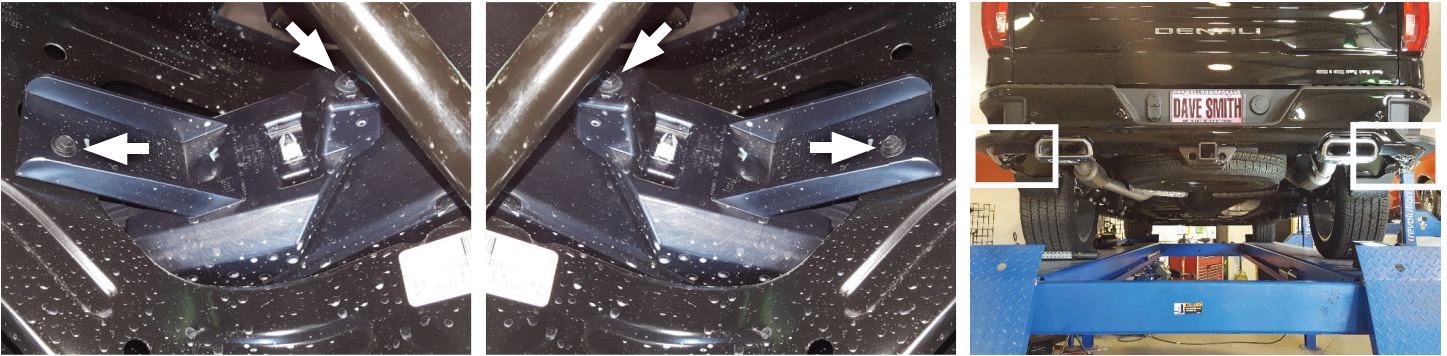
To ease preparation and installation of your new kit:

- Apply penetrating lubricant to mounts, bolts and clamps before you remove them.
- Use stands as necessary to support parts as you detach them from your vehicle and again as you install new parts.

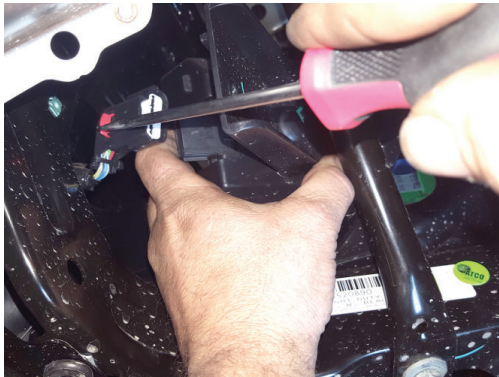


NOTE: Follow steps 3-4 only if your vehicle includes a back up sensor option (this will help you gain access to bezel screws). Otherwise, proceed to step 5.

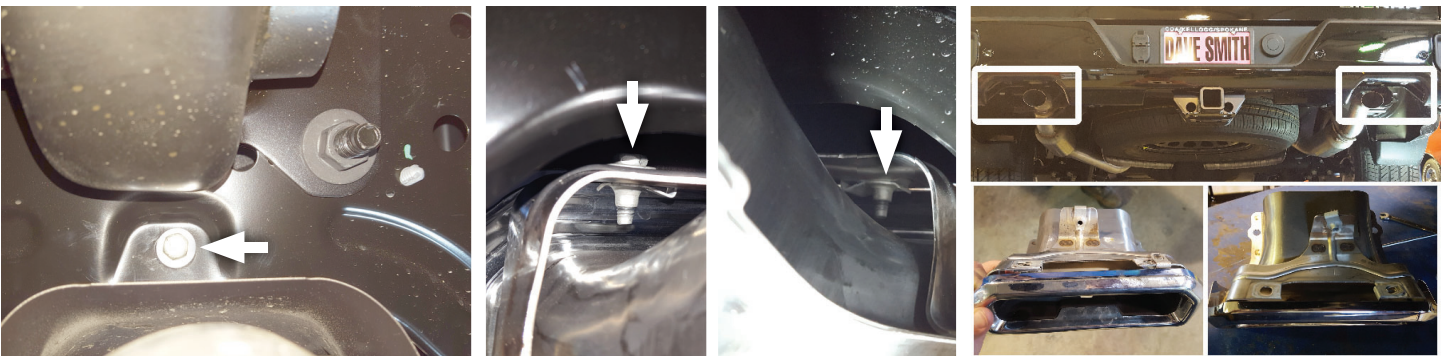
3. Remove screws (x4) securing driver and passenger side back-up sensor brackets to frame (located inside corners of rear bumper). Retain screws for later use.



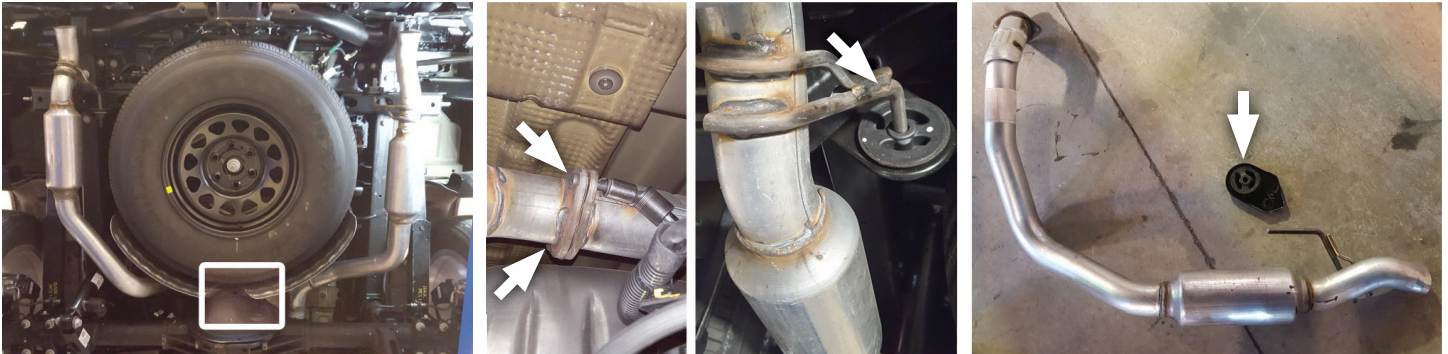
4. Unplug passenger and driver side sensor wiring then remove brackets from vehicle. Retain them for later use.



5. Remove screws (x3) securing passenger side bezel. Complete this step for driver side as well.



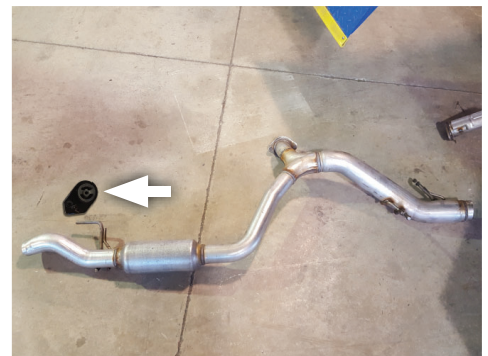
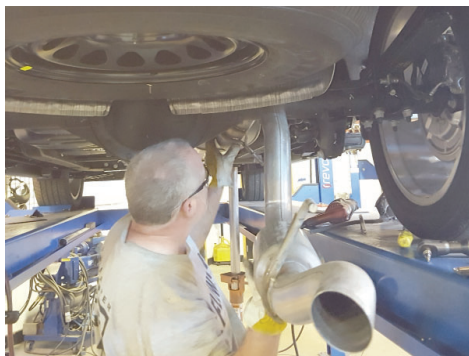
6. Remove nuts (x2) from driver side tailpipe flange. Then remove isolator and bolt from frame and disassemble tailpipe from vehicle. Retain isolator and bolt for later use.



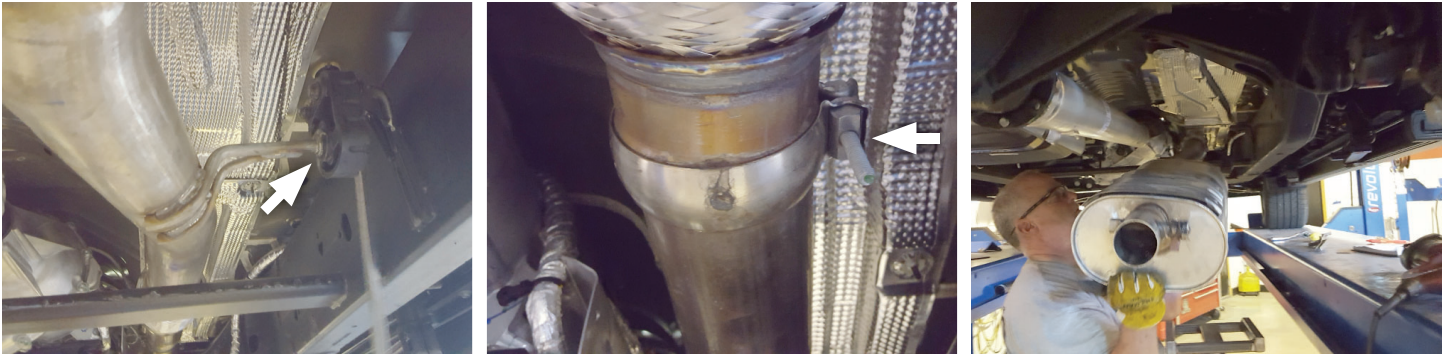
7. Remove passenger side tailpipe isolater from frame. Then cut remaining tailpipe assembly just behind muffler exit.



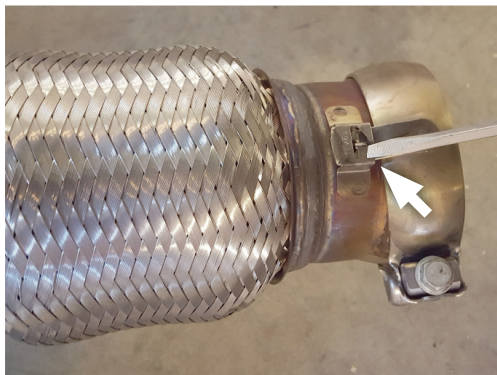
8. Disassemble tailpipe wire hangers from rear isolators then remove remaining tailpipe from vehicle. Retain isolater and bolt for later use.



9. Disassemble inlet pipe wire hanger from isolater.
Loosen factory clamp at catalytic converter and remove remaining muffler assembly from vehicle.



10. Release tab and remove clamp from muffler assembly.
Retain for later use.



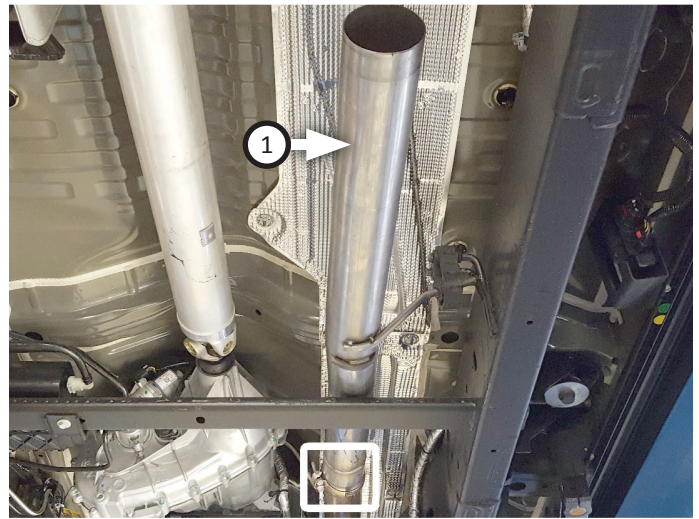
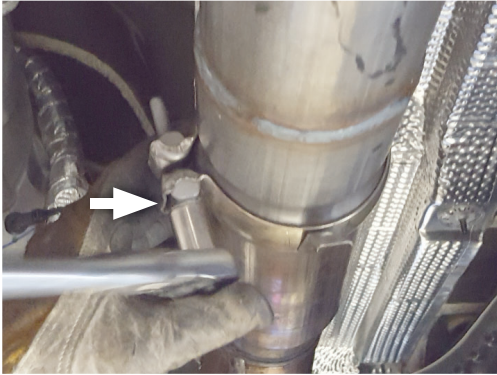
11. Remove nuts from stock and Flowmaster clamps, apply anti-seize compound to bolts and re-install nuts.

NOTE: The image in this step is intended for illustrative purposes only and may or may not accurately reflect components included in your kit.



INSTALL FLOWMASTER EXHAUST SYSTEM

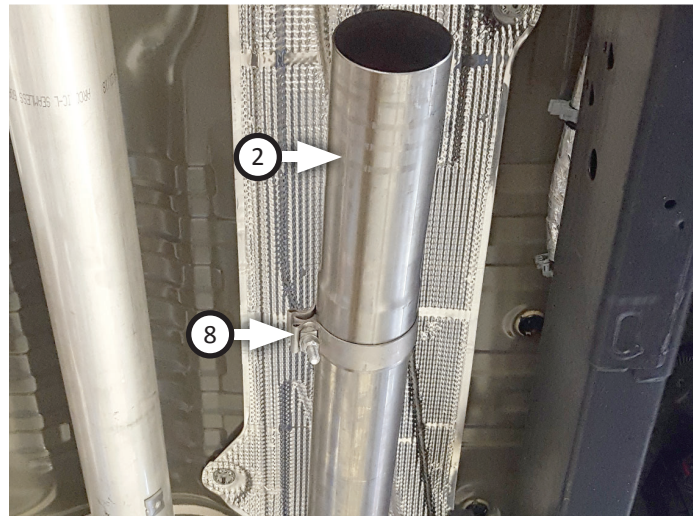
12. Place clamp (removed step 10) onto **inlet pipe (1)**. Connect inlet pipe to catalytic converter and mount wire hanger into factory isolator. Tighten clamp just enough to allow for adjustment.



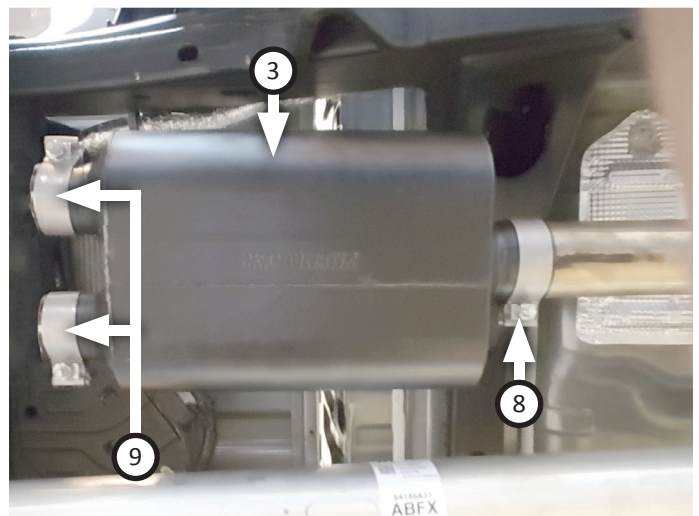
NOTE: Complete this step only if your vehicle requires an extension pipe. Reference specifications below to verify.

| WHEEL BASE | BODY STYLE | BED LENGTH | INLET ASSY: |
|------------|------------|------------|-----------------|
| 148" | Crew Cab | 5.8' | Inlet Pipe only |
| 157" | Crew Cab | 6.6' | Inlet+Extension |
| 148" | Double Cab | 6.6' | Inlet Pipe only |

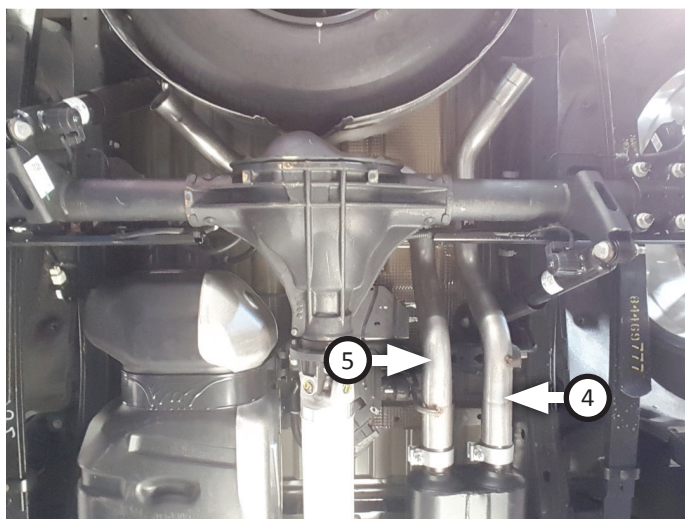
13. Place **clamp (8)** onto **extension pipe (2)** inlet then connect extension to inlet pipe.



14. Place **clamp (8)** onto **muffler (3)** inlet. Place (x2) **clamps (9)** onto muffler outlets. Connect muffler to inlet or extension pipe then tighten front clamp just enough to allow for adjustment.



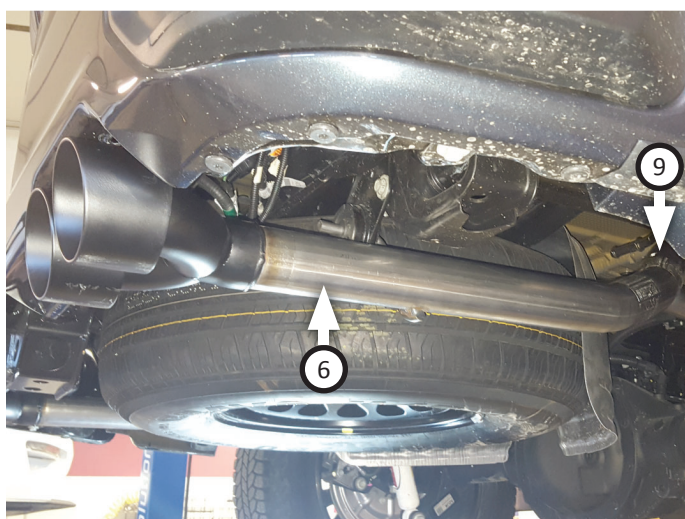
15. Route **right front tailpipe (4)** and **left front tailpipe (5)** over axle and connect them to muffler outlets. Mount wire hangers into isolators then tighten clamps enough to allow for adjustment.



16. Place **clamp (9)** and isolator (removed step 6) onto **left rear tailpipe (7)** then connect it to left front tailpipe. Fasten isolator with bolt then tighten clamp enough to allow for adjustment.

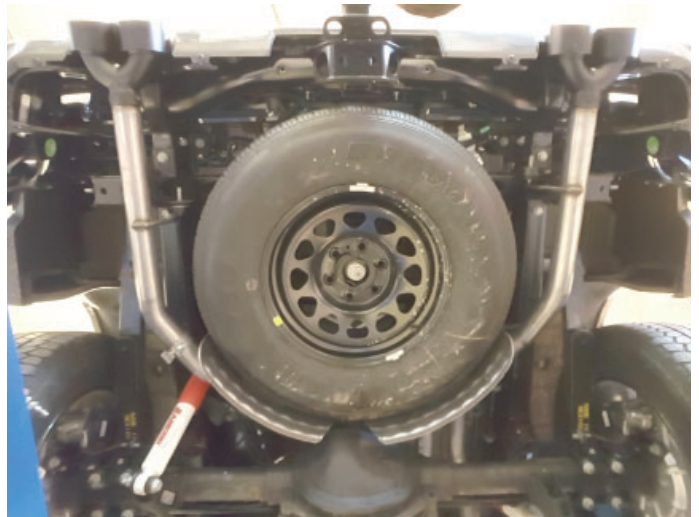


17. Place **clamp (9)** and isolator (removed step 8) onto **right rear tailpipe (6)** then connect it to right front tailpipe. Fasten isolator with bolt then tighten clamp enough to allow for adjustment.



18. For applicable vehicles, re-install back up sensor brackets and screws (removed steps 3-4) then plug in sensor wiring.
19. Adjust exhaust components for fit; maintaining ½" clearance and compensating for suspension, travel and vibration then tighten all clamps.

NOTE: If your exhaust system still needs alignment, adjust isolator mounts in step 16 and 17.



20. Fit (x5) **hanger keepers (10)** onto each sideways hanger.
21. Recommended: Secure slip-fit connections with a 1-inch tack weld then spray high-temp paint over each weld to prevent rust and premature corrosion.



Congratulations, the installation of your FLOWMASTER performance exhaust system is now complete!





Installation Diagram
817895
2019-20 GM SILVERADO/SIERRA 1500
5.3L ENGINE
2/4 WD with Dual Exhaust
Crew Cab 4WD & Double Cab

