



USB to Serial Adapter Installation

Part No: 890-CA-USB2SER



Please note: You must install the DataLink II CD provided before plugging in your USB to Serial adapter

In order to communicate with your Racepak Data Logger, you must use the serial cable that was provided with your system. Newer PC's and laptops now feature USB ports in place of a traditional 9-pin serial port. The USB to Serial Adapter will allow you to plug your Racepak cable into a USB port on your PC or laptop.



In order to use the USB to Serial adapter, your PC must have a USB port and Windows 98, Me, 2000, XP, Vista and Win 7. The USB connector on your PC is rectangular shaped and has the USB connector logo shown to the right. If your PC does not meet these requirements contact Racepak at 949-709-5555 for more information.

Windows 98, ME, 2000, XP, Vista and Win 7 Installation:

If you are currently running Datalink II version 3.1.0 or later, Windows will automatically install the necessary device driver. If are running an earlier version of the Datalink software, you must download the latest version from our website at www.racepak.com, or contact a Racepak representative at 949-709-5555.

DataLink Configuration:

The last step is to setup the DataLink software to use the correct communications port. This system is automated in Datalink II version 3.1.0 and later, using the **Scan COM Ports** option under **Settings**, shown, right.



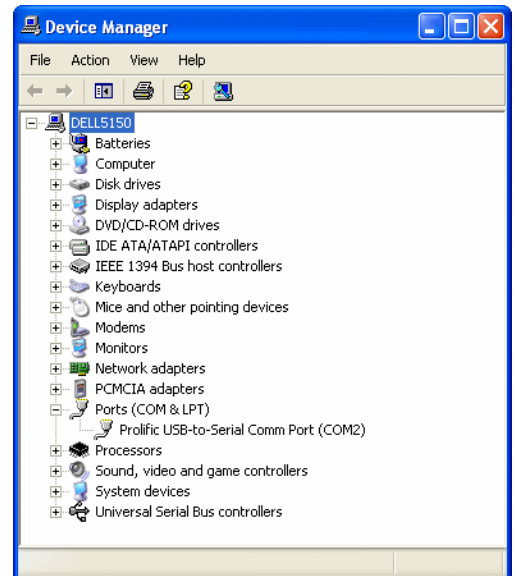
You should now be able to communicate with your Racepak logger. However, if your Racepak hardware was not found using the **Scan COM Ports** function, or you are using a Racepak logger other than a V300, V300SD or V500, please refer to the instructions on the reverse side of this document.

Note: If the **Scan COM Ports** function in Datalink II is unable to locate your Racepak hardware, or you need to know the COM port assignment of the adapter cable for another program (i.e.: AltaCom, MSD, etc.) follow the steps below.

Windows Device Manager:

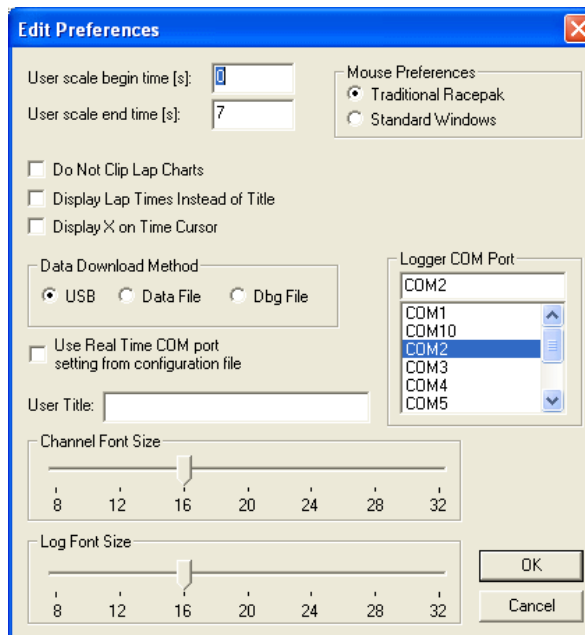
In order to find the port Windows has assigned to your USB to Serial adapter, you may look in the Windows operating system's Device Manager, located within the Windows Control Panel. You should see an entry titled **Ports (COM & LPT)**. Please note the port number that Windows has assigned to the adapter cable. In the example shown to the right, the adapter has been assigned to **COM2**.

After you have noted what port Windows has assigned to the adapter cable, you may continue to the next section **DataLink Configuration** below.



DataLink Configuration:

To do this manually in the DataLink software, select **Settings** then **Preferences**. You should get a box similar to the one shown below.



Under **Logger COM Port** select the COM port Windows has assigned to the USB to Serial adapter cable and click the **OK** button.

The installation is now complete and you are ready to communicate with your Racepak data logger.