



## THROTTLE CABLE & KICKDOWN BRACKET KIT P/N 1953



### INSTALLATION INSTRUCTIONS:

1. Bolt the 2 brackets together, if both the throttle & trans kick-down brackets are required, using the supplied 1/4"-28 bolts, washers, and nuts.
2. Install the trans kick-down stud for the specific transmission type as shown in Figure 4 (TH350) or Figure 5 (700R4).
3. Put the throttle cable bracket in position on the carburetor flange using the nut from the mounting stud.
4. Follow the manufacturer's instructions for adjusting the cable(s).

**WARNING!** If you are unfamiliar with overdrive transmission TV cable adjustments, consult a qualified transmission expert. Failure to properly adjust the TV cable on overdrive transmissions can lead to poor shifting and / or transmission failure. Holley assumes no responsibility for transmission damage or failure caused by improperly adjusted TV cables.

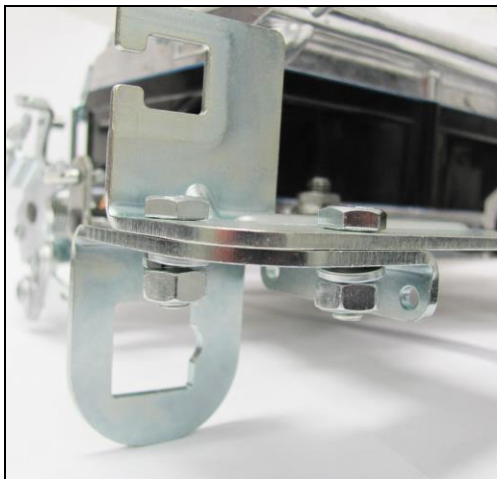


Figure 2

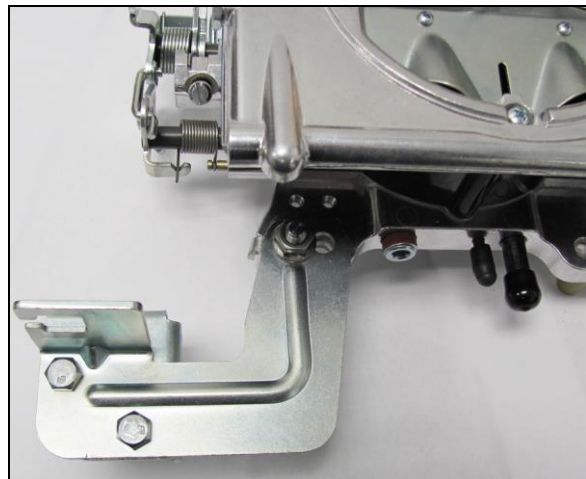


Figure 3

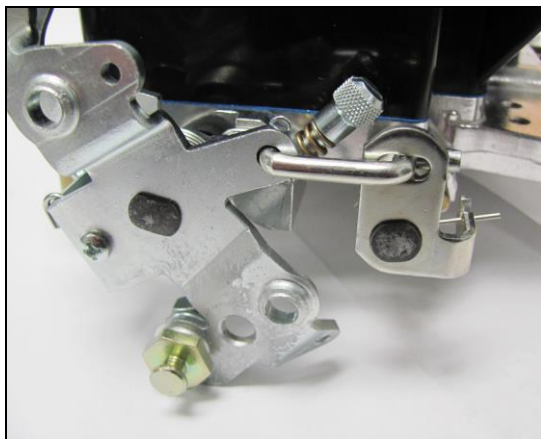


Figure 4 - TH350



Figure 5 - 700R4

LIT713

Date: 4-23-12